



The Coalition for Collaborative Care (or C4CC for short)

Co-Production (or Working Together) Group Joining Form



Easy
Read



Co-Production or Working Together Group Joining Form



Part 1 - About you.

Your name:

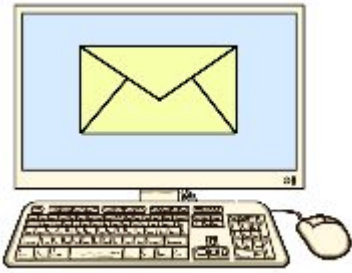
Address:

Postcode:

Home Phone Number:

Mobile Number:





Email:

Can we give this to other group members?



Yes

No



Your twitter name (if you have one):

Can we give this to other group members?



Yes

No



What is the best way to get in touch?



Part 2 - Tell us why you want to join the group.

Write 600 to 900 words including:



- more about yourself and what you have done



- what other groups do you belong to, or have belonged to?



- how you would support the C4CC group.

Part 2 - Tell us why you want to join the group: continued.



Part 2 - Tell us why you want to join the group: continued.



Part 2 - Tell us why you want to join the group: continued.





Part 3 – what needs do you have?

Tell us about any access or food needs you have and what we can do to help.





Part 4 – a shorter piece about yourself.

Please write just 150 words about you and what you have done.



Send us a photo as well.

This is to let people quickly find out more about you.

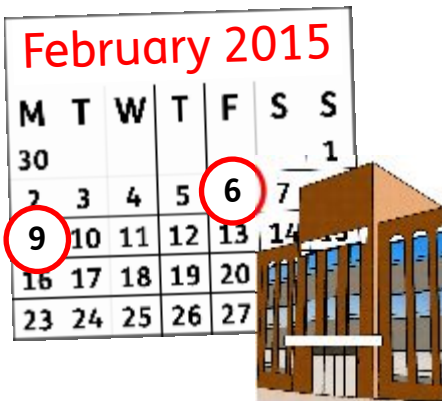


Or we can write it for you using the information you gave us in Part 2.



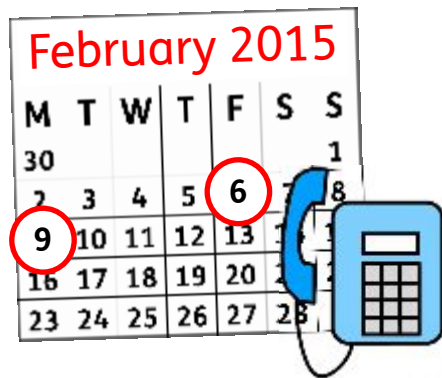
What happens next?

We will decide who to **interview**. An interview is where we ask you more questions to help us choose the best people.

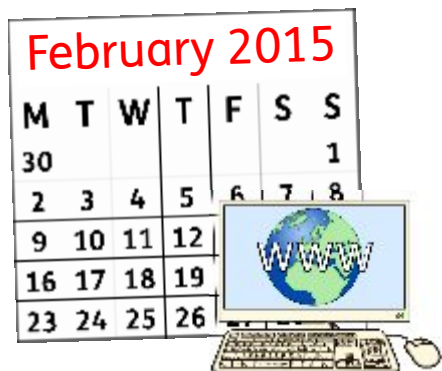


You can choose how to do the interview:

1. by coming to Skipton House in London on Friday 6 or Monday 9 February 2015



2. by telephone on Friday 6 or Monday 9 February 2015



3. by video over the internet or Skype on Friday 13 Feb 2015.



When you have filled in this form please send it to:

Wilhelmina Dowdye

By Email to:

w.dowdye@nhs.net



By Post to:

Mina Dowdye

Coalition for Collaborative Care

6th Floor, Skipton House

80 London Road

London

SE1 6LH

February 2015						
Mon	Tues	Weds	Thurs	Fri	Sat	Sun
						1
2	3	4	5	6	7	8
9	10	11	12	13	14	15
16	17	18	19	20	21	22
23	24	25	26	27	28	

It must get to us by 2 February 2015.

Click below to send
this form by email



Credits

This paper has been designed and produced for The Coalition for Collaborative Care by the EasyRead service at Inspired Services Publishing Ltd. Ref. ISL 177/14. January 2015.



www.inspiredservices.org.uk

It meets the European EasyRead Standard.



It has been user-checked by the **Making It Easier Group** of people with learning disabilities.



Artwork includes material from the Inspired EasyRead Collection and cannot be used anywhere else without written permission from Inspired Services.

www.inspired.pics