



Organisational and supporting **processes**

Engaged, informed **individuals** and carers



Person-centred coordinated care, through care and support planning

Health and care **professionals** committed to partnership working



Commissioning including "more than medicine"



Organisational and supporting **processes**

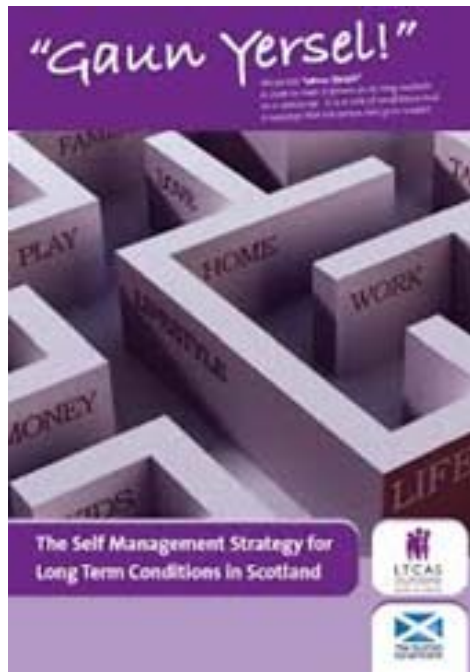
Engaged, informed **individuals** and carers



Health and care **professionals** committed to partnership working



Commissioning including "more than medicine"



Gaun Yersel (2008)

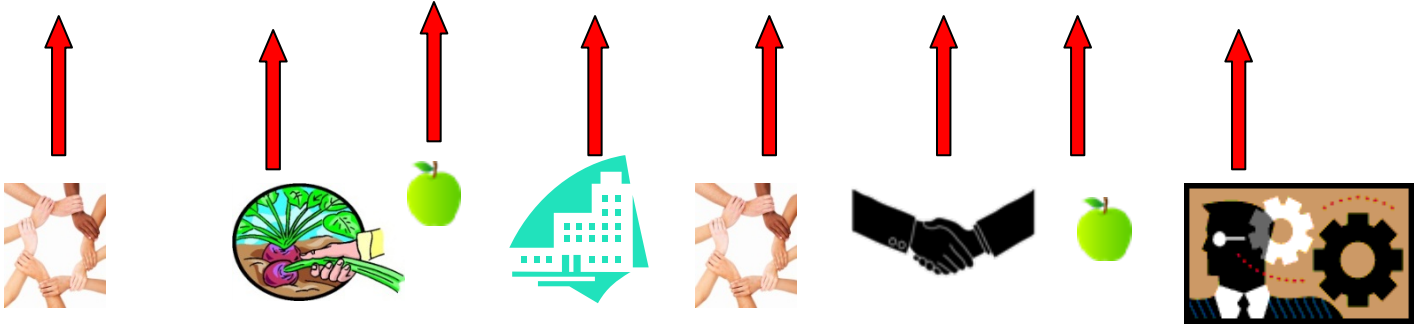
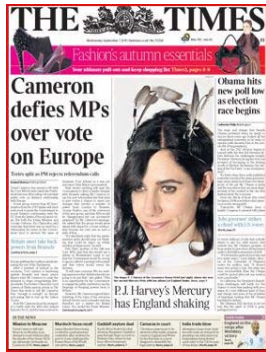
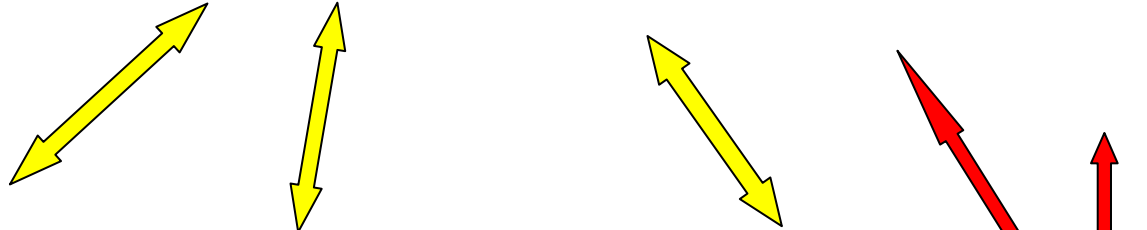
- “The partnership with the individual is central to the self management agenda”
- “I am the leading partner in the management of my own health”



Technical 'handshakes' →

Directories or 'Asset Mapping groups' →

Hyper local & locally relevant assets' →



Making it Easy

A Health Literacy Action Plan
for Scotland



We want Scotland to be a health literate society which **enables** all of us to have sufficient confidence, knowledge, understanding and skills to live well, on our own terms, and with any health condition we may have.

